



ERVEYSA

High quality guide bushes and collets





ERVEYSA

High quality guide bushes and collets

www.erveysa.com

CONTENTS

Guide Bushes

Carbide Guide Bushes.....	04
Special Guide Bushes.....	06

Collets

Dead Length Collets.....	07
Long Nose Collets.....	09
Long Nose Collets with Internal Thread.....	10
Collets For Hydromat	11
Gildemeister Clamping Collets.....	12
Schütte Clamping Collets.....	13
Special Collets.....	17

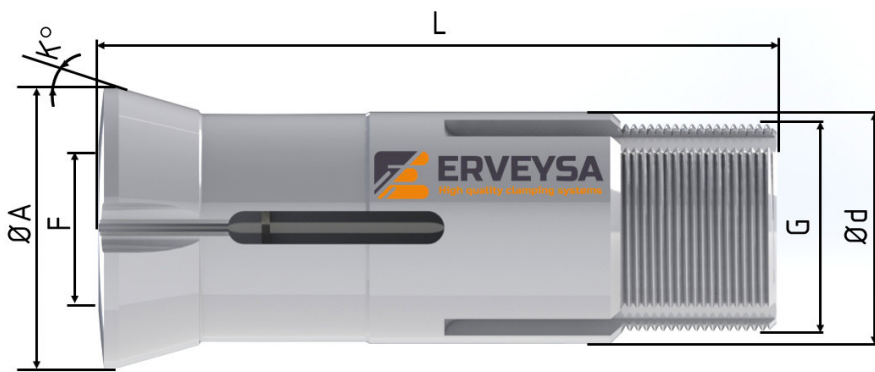
Bar Feed Collets

Pin Type.....	14
With Internal Thread.....	16

CARBIDE GUIDE BUSHES






Carbide Guide Bushes in Applications



d	Shaft-Ø
A	Head-Ø
L	Total length
K	Taper angle
G	Thread
F	Shape

CARBIDE GUIDE BUSHES SPECIFICATIONS

Code1	ø d [mm]	ø A [mm]	L [mm]	K [degree]	G	F min. - max. [mm]		
								
E9-01	9	12.5	44	16	M8x0.75	0.8-4.5	1.0-3.0	1.0-4.0
E11-01	11	14.5	53	16	M10x0.8	1.0-7.0	1.0-4.0	1.0-5.0
E16-01	16	20.5	59	16	M14x1.0	1.0-10.5	3.0-7.0	3.0-9.0
E18-01	18	22	60	30	M16x1	1.0-12.0	3.0-8.0	4.0-10.0
E18-02	18	22	60	30	M18x1	1.0-12.0	3.0-8.0	4.0-10.0
E21-01	21	24	57,5	12	M18x1	3,0 – 13,0	3,0 – 9,0	4,0 – 11,0
E22-01	22	29	68	16	M19x1	2,0 – 14,5	3,0 – 10,0	4,0 – 12,5
E22-02	22	29	68	16	M22x1	3,0 – 16,5	3,0 – 11,5	4,0 – 14,0
E24-01	24	29,5	61	30	M24x1	2,0 – 17,0	3,0 – 12,0	4,0 – 14,5
E26-01	26	29	77	16	M25x1	2,0 – 19,0	3,0 – 13,0	4,0 – 16,0
E28-01	28	34	82	16	M25x1	3,0 – 20,0	3,0 – 14,0	3,0 – 17,0
E28-02	28	38	81	30	M25x1	3,0 – 20,0	3,0 – 14,0	4,0 – 17,0
E30-01	30	35	59	16	M30x1	3,0 – 23,0	3,0 – 16,0	3,0 – 19,0
E34-01	34	41	87,5	10	M34x1	3,0 – 26,0	3,0 – 18,0	4,0 – 22,5
E42-01	42	49	82	16	M40x1	4,0 – 32,0	3,0 – 22,5	4,0 – 27,5
E42-02	42	48	82	20	M40x1	4,0 – 32,0	3,0 – 22,5	4,0 – 27,5
E44-01	44	51	82	16	M42x1	10,0 – 35,0	10,0-23,0	10,0-28,0
E48-01	48	54	82	16	M46x1	10,0 – 38,0	10,0-27,0	10,0-33,0
E46-01	46	53	82	16	M45x1	10,0 – 38,0	10,0-26,0	10,0-32,0
E48-02	48	54	81	10	M46x1	10,0 – 38,0	10,0-27,0	10,0-33,0
E48-03	48	56	81	30	M48x1,25	10,0 – 38,0	10,0-27,0	10,0-33,0

SPECIAL GUIDE BUSHES



Our grinding machines provides highly competitive by its productive efficiency because of high-speed grinding and stable precision.

- Bore Diameter from 2mm to 42mm
- Standard length and long carbide (30mm, 40mm, 50mm, 70mm)
- High alloy steel guide bushes
- Carbide insert
- High accuracy and concentricity
- Square, ball, hexagon or which geometry can you need
- Special guide bushes that prevent machining chips from entering the guide bush.

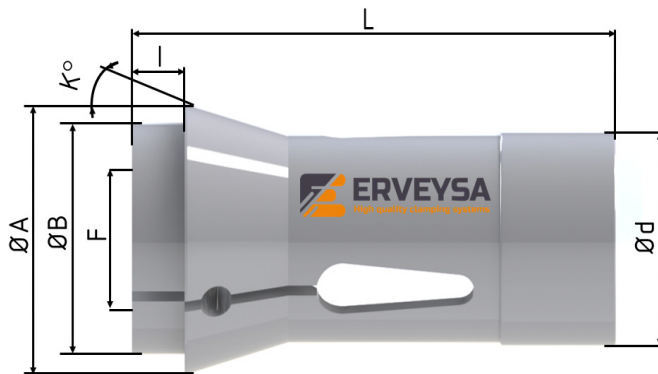
Specifications

Technical Specification	Value
Grinding Capacity	Ø 2-320 mm
Maximum Grinding Depth	250 mm
Maximum Workpiece Weight	50 kg

DEAD LENGTH COLLETS



Dead Length Collets in Applications






d	Shaft-Ø
A	Head-Ø
B	Nose-Ø
l	Nose length
L	Total length
K	Taper angle
F	Shape

Specifications

Code	ø d [mm]	ø A [mm]	ø B [mm]	l [mm]	L [mm]	K [degree]	F min. - max. [mm]		
							●	■	⬡
E101 TF8 F8-577	8	12	8	4.5	42	16	0.5-5.0	1.0-3.5	1.0-4.5
E109 TF10 F10	10	16	10	5.5	47.5	20	0.5-7.0	1.0-5.0	1.0-6.5
E116 TF13 F13	13	19	13	6	64	16	0.5-9.5	2.0-7.0	2.0-8.5
E120 TF15 F15	15	21	15	6	64	16	0.5-12.0	2.0-8.5	2.0-10.5
E1212 TF16 F16	16	21	16	6	64	16	0.5-12.0	2.0-8.5	2.0-10.5
E127 TF18 F18	18	25	18	6	67	16	0.5-13.0	2.0-9.5	2.0-11.5
E136 F20-201	20	26	19	5	54	15	2,5 - 16,5	2,0 - 12,0	2,0 - 14,5

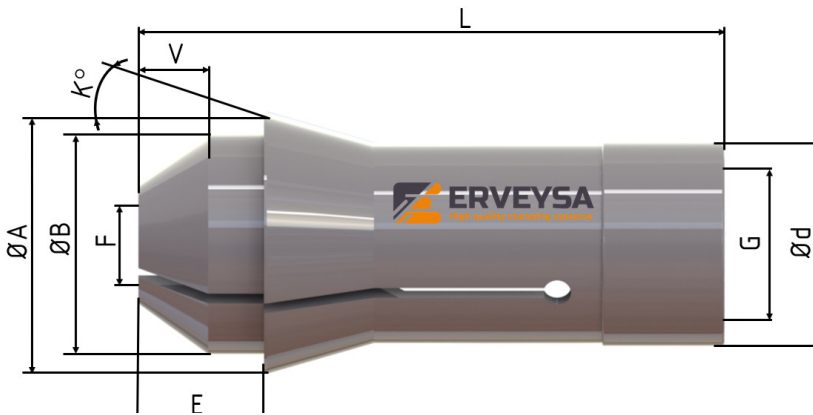
DEAD LENGTH COLLETS

Code	ø d [mm]	ø A [mm]	ø B [mm]	l [mm]	L [mm]	K [degree]	F min. - max. [mm]		
									
E138 TF20 F20-87	20	28	21	7	67	16	2,5 - 16,0	2,0 - 11,5	2,0 - 14,0
E140 TF22 F22	22	30	21	6	55	15	2,5 - 16,5	2,0 - 12,0	2,0 - 14,5
E144	25	34	25	6	65	15	2,5 - 20,0	2,0 - 14,5	2,0 - 17,0
E145 TF25 F25	25	35	27	10	77	16	2,5 - 20,0	2,0 - 14,5	2,0 - 17,5
E147 F27-22	27	38	30	8	72,7	15	2,5 - 23,0	2,0 - 16,0	2,0 - 20,0
E148 F28	28	38	28	7	70	15	2,5 - 23,0	2,0 - 16,0	2,0 - 20,0
E157 TF30 F30	30	42	34	10	80	16	2,5 - 25,0	2,0 - 18,0	2,0 - 22,0
EF30 E1446	30	38	32	6	65	15	2,5 - 26,0	2,0 - 18,5	2,0 - 22,5
E161 F32	32	45	34	8	75	15	2,5 - 25,5	2,0 - 18,0	2,0 - 22,5
E162	35	43	34	7	70	15	2,5 - 29,5	2,0 - 21,0	2,0 - 25,5
E163 F35	35	48	38	8	80	15	2,5 - 30,5	2,0 - 21,5	2,0 - 25,5
EF37 TF37 E1536	37	47	40	10	92	16	2,5 - 32,0	2,0 - 22,5	2,0 - 27,0
E164 F38	38	49	38	9,5	108	15	2,5 - 32,0	2,0 - 22,5	2,0 - 28,0
EF40	40	47	40	10	92	16	2,5 - 36,0	2,0 - 25,5	2,0 - 31,5
E171 F42	42	55	42	9	94	15	2,5 - 37,0	4,0 - 26,5	4,0 - 32,0
E173 F48	48	60	50	9	94	15	2,5 - 42,0	4,0 - 30,0	4,0 - 36,5
TF48	48	60	50	9	94	15	2,5 - 42,0	4,0 - 30,0	4,0 - 36,5
E177 F58	58	70	60	9	94	15	3,0 - 52,0	4,0 - 37,0	4,0 - 45,0
E185 F66	66	84	73	9	110	15	3,0 - 60,0	5,0 - 42,5	5,0 - 52,0
E190 F88	88	106	94	10	115	15	60,0 - 80,0	20,0 - 56,0	20,0 - 69,0
E193 F90	90	107	92	12,5	130	15	INFO	INFO	INFO

LONG NOSE COLLETS



Long Nose Collets in Applications



d	Shaft- \varnothing
A	Head- \varnothing
B	Nose- \varnothing
V	Long nose length
E	Total long nose length
L	Total length
G	Thread
K	Taper angle
F	Shape

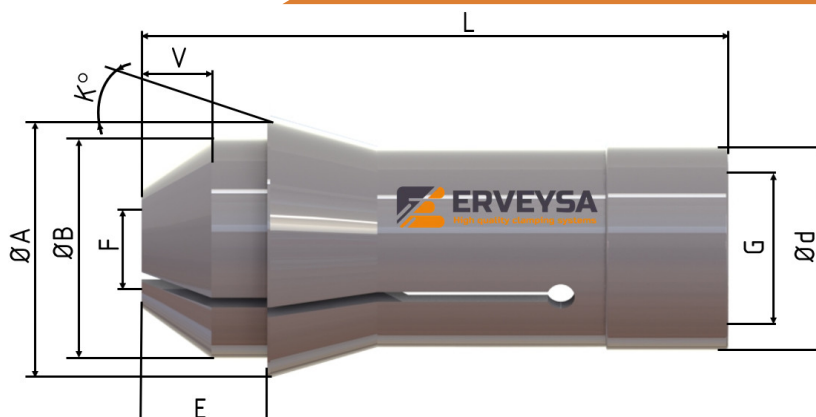
Specifications

Code	$\varnothing d$ [mm]	$\varnothing A$ [mm]	$\varnothing B$ [mm]	V [mm]	E [mm]	L [mm]	K [degree]	G	F min. - max. [mm]
									●
F16-58	16	21	16	8	15	73	16	M14x0.75	2,5 - 16,0
E136 F20	20	26	19	8 10	13 15	62 64	15		2,5 - 16,0
E136 M18x1	20	26	19	8 10	13 15	62 64	15	M18x1	2,5 - 16,0
E138 F20	20	28	21	8 13	15 20	75 80	16		2,5 - 16,0
E138 M17x0,75	20	28	21	8 13	15 20	75 80	16	M17x0,75	2,5 - 16,0
E145 F25	25	35	27	10 15	20 25	87 92	16		2,5 - 20,0
E145 M22x1	25	35	27	10 15	20 25	87 92	16	M22x1	2,5 - 20,0
E1446 EF30-101	30	38	32	14	20	79	15		2,5 - 26,0
E161 F32-221	32	45	34	15	23	90	15		2,5 - 25,0
E163 F35	35	48	38	19	27	99	15		2,5 - 30,0
E1536 F37	37	47	40	10 15	20 25	102 107	16		2,5 - 32,0
E164 F38-76-2004	38	49	38	15	24,5	123	15		2,5 - 32,0
E173 F48-76-2006	48	60	50	19	28	113	15		2,5 - 42,0

LONG NOSE COLLETS WITH INTERNAL THREAD



Long Nose Collets with Internal Thread in Applications

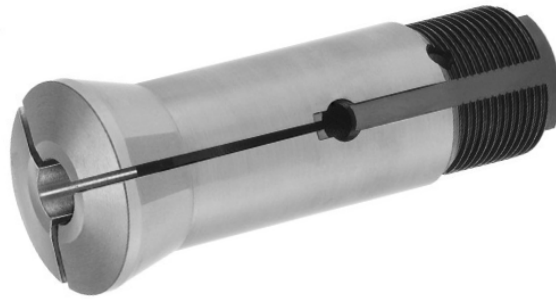


d	Shaft-Ø
A	Head-Ø
B	Nose-Ø
V	Long nose length
E	Total long nose length
L	Total length
G	Thread
K	Taper angle
F	Shape

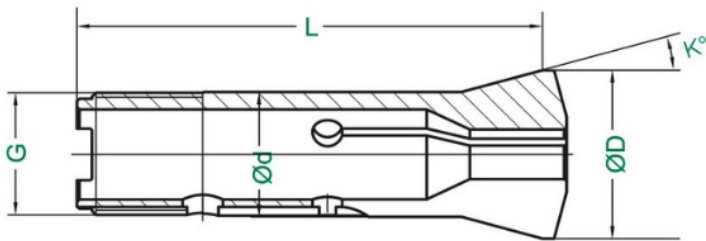
Specifications

Code	DIN C0de	Ø d [mm]	A [mm]	B [mm]	L [mm]	K [degree]	G(Thread)
F20	DIN138E	20	28	21	67	16	M18x1
F25	DIN145E	25	35	27	77	16	M22x1
F48	DIN173E	48	60	50	94	15	M43x1
F66	DIN185E	66	84	73	110	15	M61x1

COLLETS FOR HYDROMAT



Collets For Hydromat in Applications



d	Shaft-Ø
A	Head-Ø
L	Total length
K	Taper angle
G	Thread
F	Shape

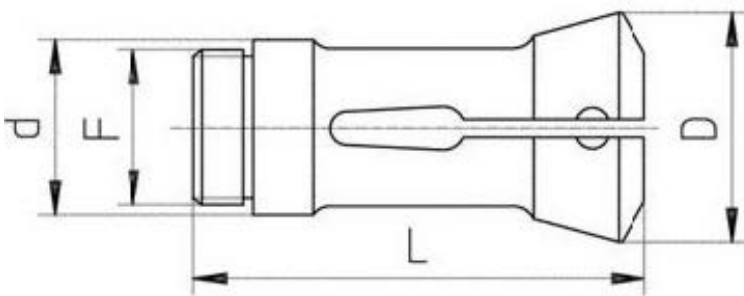
Specifications

Code	ø d [mm]	ø A [mm]	L [mm]	K [degree]	G	F min. – max. [mm]			Step Bore
						●	■	⬡	
3490 E	20	26,3	92,5	15	Ø19,7×1,666 45°/5°	3,0 – 13,5	2,0 – 9,5	2,0 – 11,5	
3640 E	25	33,7	92,5	15	Ø24,7×1,693 45°/5°	3,0 – 17,5	3,0 – 12,0	3,0 – 15,0	
3640 E	25	33,7	92,5	15	Quick change	3,0 – 17,5	3,0 – 12,0	3,0 – 15,0	
3714 E	32	40	100	15	Ø29,7×1,693 45°/5°	3,0 – 23,5	3,0 – 16,5	3,0 – 20,0	
3727 E	32	53	116	15	Quick change	3,0 – 26,0	3,0 – 16,5	3,0 – 20,0	
3839 E	45	53	109	15	Quick change	3,0 – 36,0	3,0 – 25,0	3,0 – 31,0	
3854 E	45	68	129	15	M42x1,5	3,0	36,0 3,0	26,5 3,0	30,0

GILDEMEISTER CLAMPING COLLETS



Gildemeister Clamping Collets in Applications



d	Shaft-Ø
D	Head-Ø
L	Total length
a	Taper angle
F	Thread

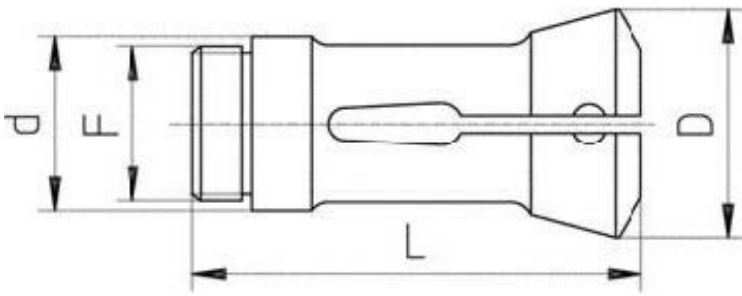
Specifications

Code	Description	ø d [mm]	ø D [mm]	Total length L [mm]	Taper angle a [degree]	Thread (F)	Diameter max	Hex max
9013E	AS12	26,8	34,0	88,0	15°5'	M24X1.0 Left	12,0	10,0
9012E	AS16/20 GS/ GM20	34,0	42,0	90,0	16°	M30X1.0 Left	24,0	19,0
9017E	AS16/20 GS/ GM20 Mod. 25	38,0	42,5	90,0	16°	M34.5X0.75 Left	27,0	24,0
9023E	GM16	30,0	39,0	80,5	15°	AtcB 27.12x1,5 60	16,0	14,0
9045E	AS25	45,0	60,4	164,0	15°	M40X1.0 Left	25,0	22,0
9046E	GS25 Mod. 32	45,0	60,4	164,0	15°	M42X1.0 Left	26,0	22,0
9069E	AS32 GM32/35	53,0	69,4	139,0	15°	M48X1.5 Left	38,0	31,0
9115E	GM42	64,0	80,5	134,0	15°	M59X1.5 Left	45,0	40,0
9132E	AS48	70,0	90,4	167,5	15°	M65X1.5 Left	53,0	45,0
9178E	AS67	90,0	115,4	183,5	15°	M85X1.5 Left	67,0	55,0

SCHÜTTE CLAMPING COLLETS



Schütte Clamping in Applications



d	Shaft-Ø
D	Head-Ø
L	Total length
a	Taper angle
F	Thread

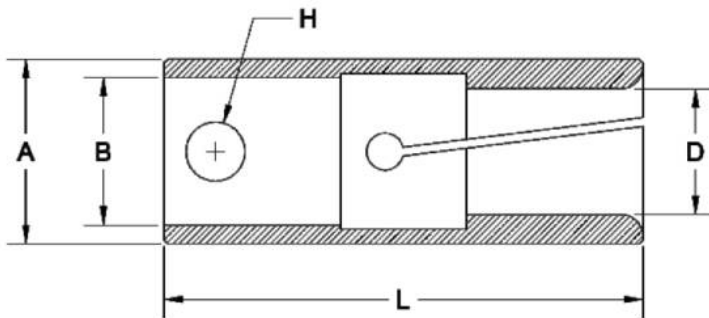
Specifications

Code	Description	ø d [mm]	ø D [mm]	Total length L [mm]	Taper angle a [degree]	Thread (F)	Diameter max	Hex max
9015E	SF13	25,0	36,1	75,0	15° 10'	M22X1 Left	13,0	11,0
9007E	SE16/18	31,9	42,0	84,0	15°	M28X1 Left	19,0	17,0
90076H	SG18-AG20	32,0	41,8	84,0	15°	M28X1 Left	19,0	16,0
90078H	SG18-AG20	320,0	41,5	84,0	15°	M30X1 Left	23,0	19,0
9016E	SF20	32,0	41,5	84,0	15°	M30X1 Left	20,0	17,0
9039E	SD/SE25-AF26	46,0	60,3	120,0	15°	M40X1.5 Left	30,0	28,0
SEF0020	36PC	56,0	72,0	139,0	15°	M52X1.5 Left	36,0	31,0
9070E	SD/SF/AF32	53,0	69,3	136,5	15°	M47X1.5 Left	38,0	32,0
9112E	AD40-SF42	62,9	78,3	157,0	15°	M56X1.5 Left	49,0	41,0
9139E	AF51-SF51-SD50	75,0	97,8	187,0	15°	M68X1.5 Left	51,0	44,0
9179E	SF63	90,0	115,3	212,0	15°	M82X1.5 Left	63,0	55,0
9187E	SF67	89,9	115,4	180,0	15°	M85X1.5 Left	70,0	63,0
9210E	SF81	109,0	138,8	241,0	15°	M100X1.5 Left	80,0	73,0

BAR FEED COLLETS



Pin Type in Applications



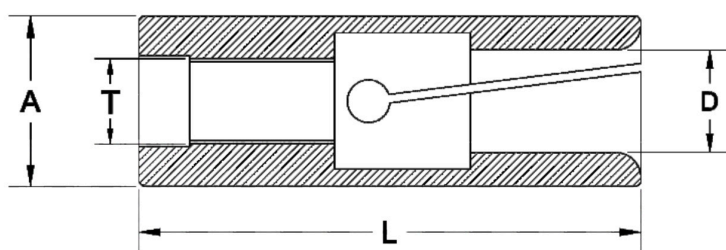
Specifications

CODE	GUIDING DIA	LENGTH	BORE DIA	HOLE DIA	RANGE	
	ø A				L	ø B
BL1501	15	55	10	6	3	13
BL1506	15	40	11	6	3	13
BL1508	15	50	11	6	3	13
BL1510	15	55	7	2	2	13
BL1603	16	65	11	6	3	14
BL1605	16	40	11	6	3	14
BL1701	17	55	7	2	13	15
BL1702	17	45	11	6	5	15
BL1801	18	40	11	6	3	16
BL1902	19	57	10	6	3	17
BL1904	19	57	10	2	3	17
BL1907	19	40	11	6	3	17
BL2005	20	56	10	6	3	17
BL2006	20	65	14	8	3	17
BL2202	22	65	14	8	18	19
BL2502	25	65	20	8	18	22
BL2503	25	76	16	8	3	22
BL3002	30	65	20	8	23	27
BL3205	32	65	20	8	28	29
BL3206	32	76	16	8	23	29
BL3401	34	90	20	8	18	31
BL3503	35	65	20	8	30	32

BAR FEED COLLETS



Pin Type in Applications



A	Outside diameter
L	Total length
T	Thread
F	Shape

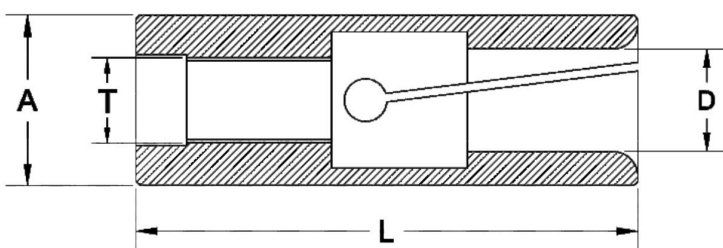
Specifications

CODE	GUIDING DIA	LENGTH	THREAD	RANGE	
	ø A	L	T	ø MIN	ø MAX
BL1509	15	73	M10x1 LH	3	13
BL1601	16	73	M10x1 LH	3	14
BL1805	18	59	M10x1 LH	13	16
BL2004	20	60	M10x1 LH	13	17
BL2507	25	59	M10x1 LH	17	22
BL2701	27	65	M10x1 LH	15	24
BL3005	30	65	M10x1 LH	17	27
BL3202	32	80	M25x1.5 LH	19	29
BL3504	35	80	M25x1.5 LH	29	32
BL4202	42	90	M25x1.5 LH	29	39
BL4204	42	80	M25x1.5 LH	32	39
BL4401	44	80	M25x1.5 LH	39	41
BL4602	46	80	M25x1.5 LH	41	43

BAR FEED COLLETS



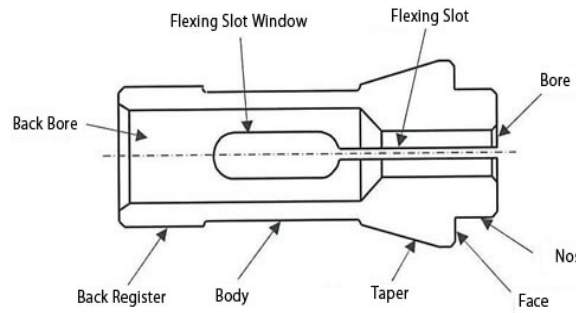
Bar Feed Collets With Internal Thread



A	Outside diameter
L	Total length
T	Thread
F	Shape

Specifications

CODE	GUIDING DIA	LENGTH	THREAD	RANGE	
	ø A	L	T	ø MIN	ø MAX
BL05/01	5.15	37	M4x0.7	1	3.5
BL7.5/02	7.5	40	M5x0.50	1	5.5
BL1503	15	60	M9x1 LH	3	13
BL1515	15	50	M9x1 LH	3	13
BL1604	16	58	M9x1 LH	3	14
BL1803	18	42	M9x1 LH	6	16
BL1804	18	60	M9x1 LH	13	16
BL1906	19	60	M9x1 LH	13	17
BL2008	20	59	M9x1 LH	13	17
BL2204	22	59	M9x1 LH	17	19
BL2305	23	60	M9x1 LH	17	20
BL2401	24	60	M9x1 LH	17	21
BL2508	25	60	M9x1 LH	17	22
BL2703	27	59	M9x1 LH	15	24
BL1504	15	60	M10x1 LH	3	13



Description

Our grinding machines provides highly competitive by its productive efficiency because of high-speed grinding and stable precision.

Simultaneous, second-by-second machining workpieces (which start out as coils, bars or blanks) are fed into a clamping ring, where they are fully machined in a single clamping step.

Operations can be performed using any combination of machining units and this can be done simultaneously. The longest operation therefore determines the machine's cycle time; all other operations are performed in this cycle time.

Machines Type

We can produce special collets specifically designed for Schütte, Gildemeister, Tornos, Wickman, Index, Mori Say, Pittler, Gridley multispindle machines, as well as Hydromat, Pfiffner and Eubama transfer machines.

Specifications

Technical Specification	Value
Grinding Capacity	Ø 0.5-420mm
Maximum Grinding Depth	320mm
Maximum Workpieces Weight	200kg



ERVEYSA

High quality guide bushes and collets





ERVEYSA

High quality guide bushes and collets

www.erveysa.com



ERVEYSA

High quality guide bushes and collets

www.erveysa.com

Phone: +90 533 216 10 28

E-Mail: sales@erveysa.com